

# LightStream Full HD 1080p Projector



**PJD7720HD**

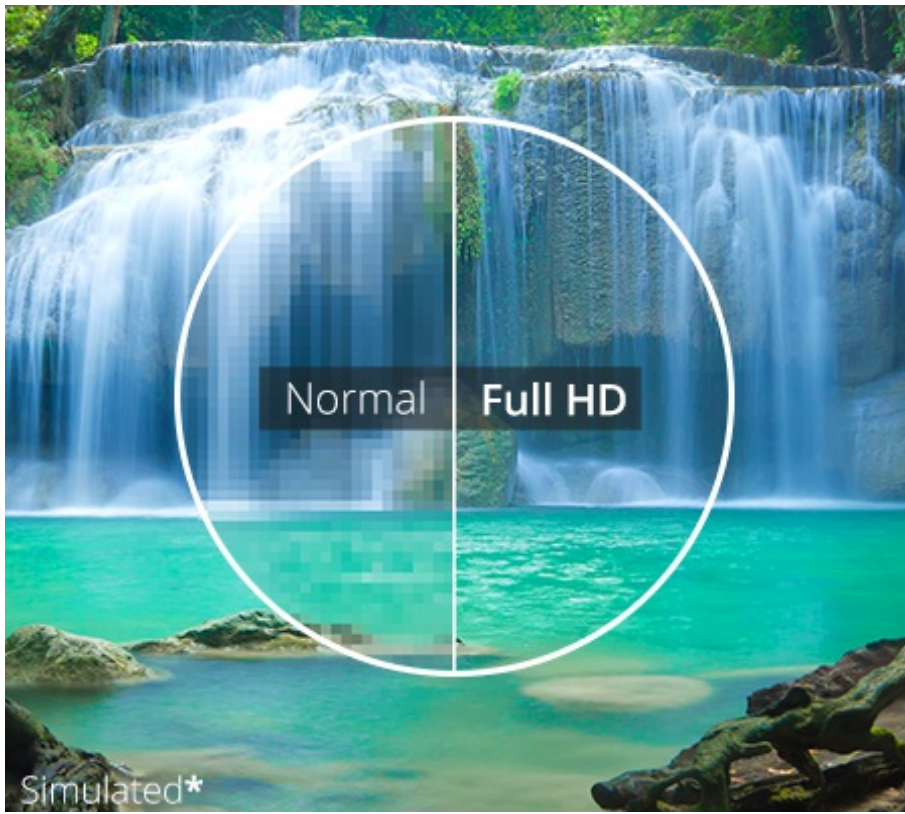


The ViewSonic LightStream™ PJD7720HD Full HD projector features 3,200 lumens, Full HD 1920x1080 native resolution, an intuitive, user-friendly design and a sleek black chassis. Exclusive SuperColor™ technology offers a wider colour range for true-to-life image projection in any light, while SonicExpert™, ViewSonic's proprietary sound enhancement technology, powers a 10W speaker to deliver incredibly clear and audible sound. PortAll™ - a neatly designed and enclosed HDMI/MHL connection compartment, supports wireless HDMI dongles or MHL connectors, while a cable management hood eliminates unsightly cable clutter. With a smart design, the PJD7720HD is the ideal projector for high definition presentations.

## Stunning Resolution and Brightness

This projector features Full HD 1920x1080 (1080p) native resolution for the sharpest and clearest picture available. It is perfect for watching all types of high definition formats (1080p/1080i/720p) and content, including movies, videos, sports, games and TV, without any distortion or scaling of the original video format.

\*The image contained herein is simulated to reflect an image under different resolution (or scheme) for demonstration purposes only, and may not be the actual image displayed from the product.



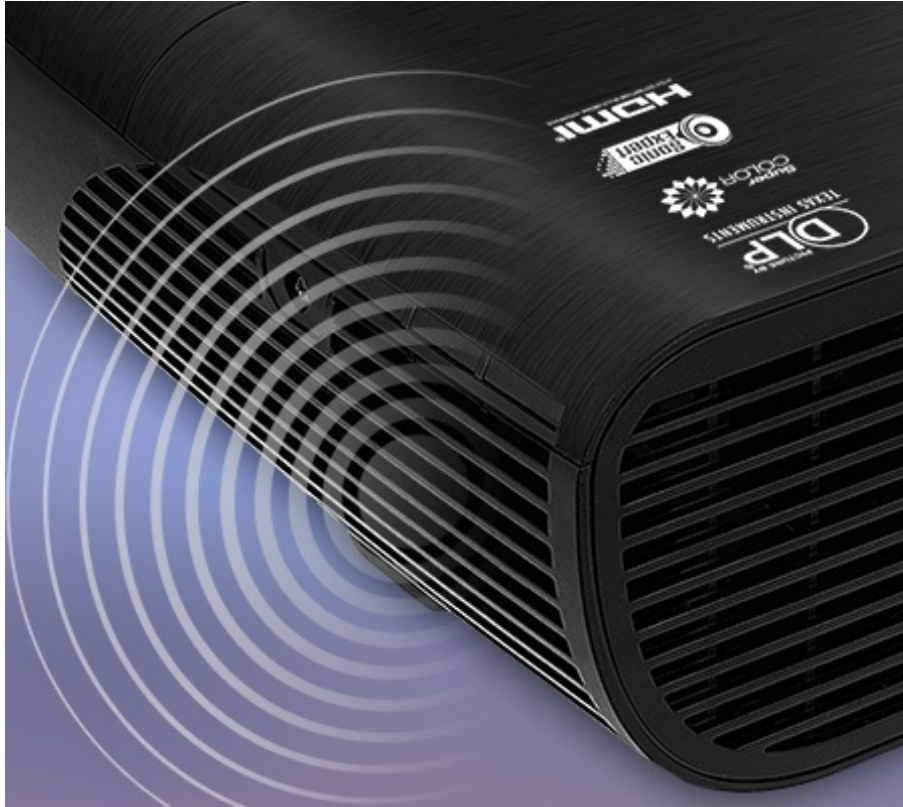
## SuperColor™ : Best-in-Class Colour Accuracy

ViewSonic's proprietary SuperColor Technology offers a wider colour range than conventional DLP projectors. With an exclusive 6-segment colour wheel design and dynamic lamp control capabilities, SuperColor Technology projects images with reliable and true-to-life colour performance, in both bright and dark environments, without sacrificing image quality.



# SonicExpert™ Technology

Following a ground-breaking proprietary speaker transducer and chamber re-design, LightStream projectors deliver full-range sound 20Hz - 20KHz for presentations or off-the-clock home entertainment. The compact speaker takes pride in quality sound with best-fit Sound Response Curve, and high efficiency of transferring electric power to sound power. SonicMode The exclusive SonicMode sound settings deliver optimized audio performance for presentations, video clips and music.



---

## PortAll™ : Discreet Wireless Streaming

This projector includes ViewSonic's exclusive PortAll feature—a hidden compartment with an integrated and secure MHL/HDMI port that lets you discreetly stream multimedia content from a wireless dongle, or lets you connect to other devices via an HDMI cable.



---

## Smart Design

The cable management hood connects onto the back of the projector to hide unsightly cable clutter and exposed ports.

An easy-access top lamp door enables simple lamp maintenance and replacement.



---

## Dual 3D Blu-ray Ready HDMI Inputs

Designed with two HDMI ports, this projector is perfect for connecting to any HDMI-enabled device, and can display 3D images directly from 3D Blu-ray players. 3D images can be viewed with optional ViewSonic PGD-350 Shutter Glasses, or any other compatible 3D glasses.

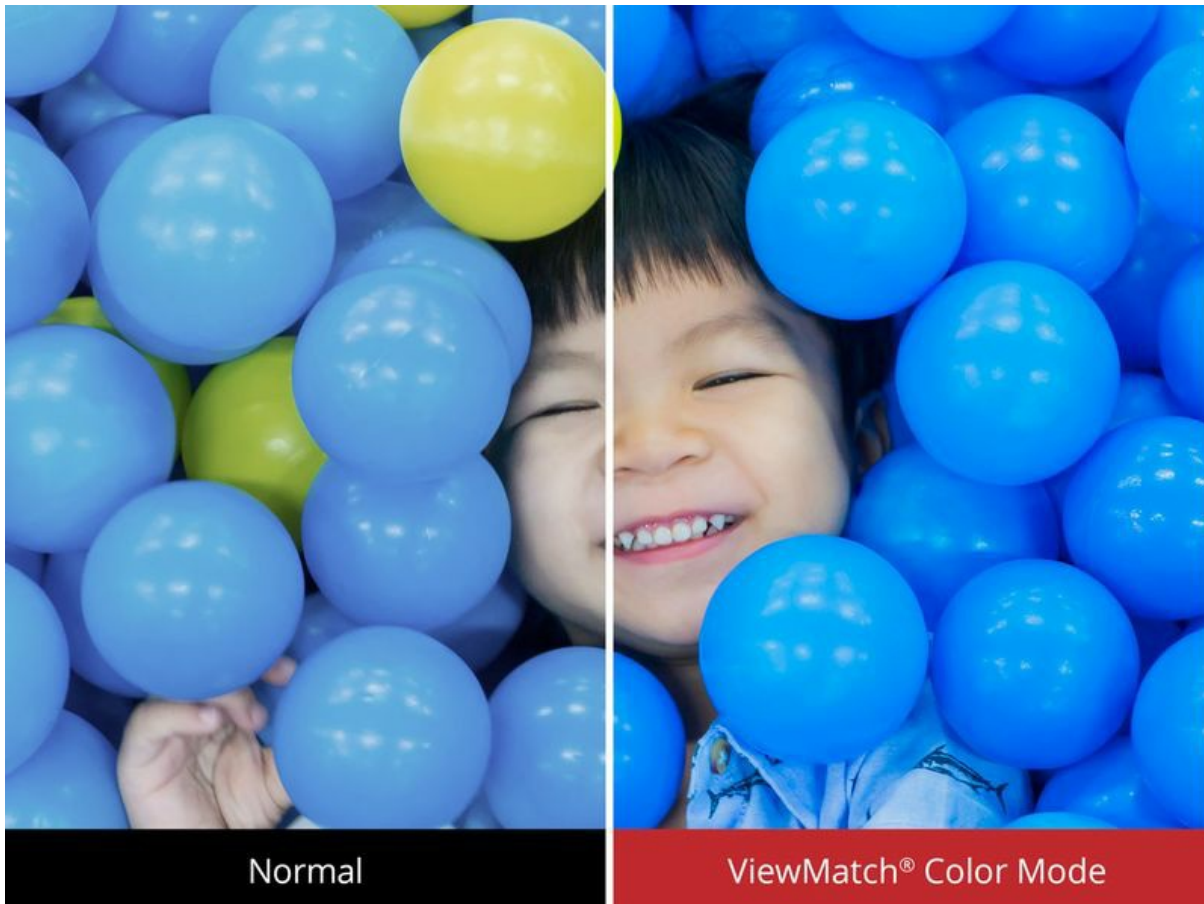
**3D**  
BLU-RAY

**HDMI x2**



## Balanced Color and Brightness

A choice of 5 unique view settings provide the best possible viewing experience in any environment regardless of ambient light.



Normal

ViewMatch® Color Mode

---

# Programmable Remote Control

A programmable hotkey “MyButton” can be configured to launch the most commonly used functions. Control up to eight projectors in the same venue or from a mobile device via free V-remote app.



---

## Industry-leading Warranty

ViewSonic offers one of the industry's best overall projector warranties with 3-year limited parts and labor, and 1-year lamp.\*

---

## Technical Specifications

---

PRODUCT SPECIFICATION		
Resolution		1920x1080
Brightness (ANSI Lumens)		3200lm
Contrast (Max.)		22000: 1
Lamp Hour (Normal / SuperEco Mode)		4000hrs / 10000hrs
Throw Ratio in Meters (Wide ~ Tele)		1.49~1.64
Optical Zoom		1.1x
Digital Zoom		0.8x~2.0x
Screen Size		30"~300"

Projection Offset	116%±5%
Display Colours	1.07 Billion Colors (30 bits per color)
Keystone	+/- 40° (Vertical)
Noise min (Normal / Eco)	35 dB / 30 dB
Speaker	10 W Cube

---

#### INPUT

<b>CONNECTIVITY</b>	HDMI/MHL	1
	HDMI In	1
	VGA-in	N/A
	Component Input	N/A
	S-Video	N/A
	Composite Input	N/A
	Audio-in (3.5mm)	2
	Audio-in (RCA pair)	N/A
	USB Type A	N/A
	USB Type B	N/A
	Mini USB	1
	Micro USB cable	N/A
	Microphone in (3.5mm)	1
	SD Card reader	N/A

---

#### OUTPUT

<b>CONNECTIVITY</b>	VGA-out	N/A
	Audio-out (3.5mm)	1

---

#### CONTROL

RS232 (9 pin)	1
Network Management (LAN cable)	N/A
12V Power Trigger	N/A

---

#### DIMENSIONS AND POWER

Dimension (WxDxH)	316 mm(W) x 228 mm(D) x 103.7 mm(H) 12.44" (W) x 8.98" (D) x 4.08" (H)
Net Weight	2.4 kg (5.29 lb)
Power Source	100~240Vac 50/60Hz
Power Consumption	330W (Max.)

---

#### SUPPLIED

<b>ACCESSORIES</b>	Power cord	1
	VGA cable	N/A
	HDMI cable	N/A
	Remote Control (with batteries)	1
	Cable cover	N/A
	Quick Start Guide & CD	1
	Carry bag	NA

---

#### LANGUAGES

On Screen Display	Total 22 languages
-------------------	--------------------

---



## ViewSonic® Limited Warranty

---

ViewSonic provides customers with the security of a manufacturers warranty against defected products. The type and duration of the applicable warranty service varies by product type, country of purchase and can also vary on an individual basis according to customer requirements agreed at time of purchase. The warranty will expire after the end of the warranty period.

---

For more product information, visit us at **[www.viewsoniceurope.com](http://www.viewsoniceurope.com)**

All rights reserved by ViewSonic Corporation. All other Corporate names and trademarks are the property of their respective companies. E&EO. All prices and specifications are subject to change without written notice. Images are for illustrative purpose only. Terms & Conditions Apply.